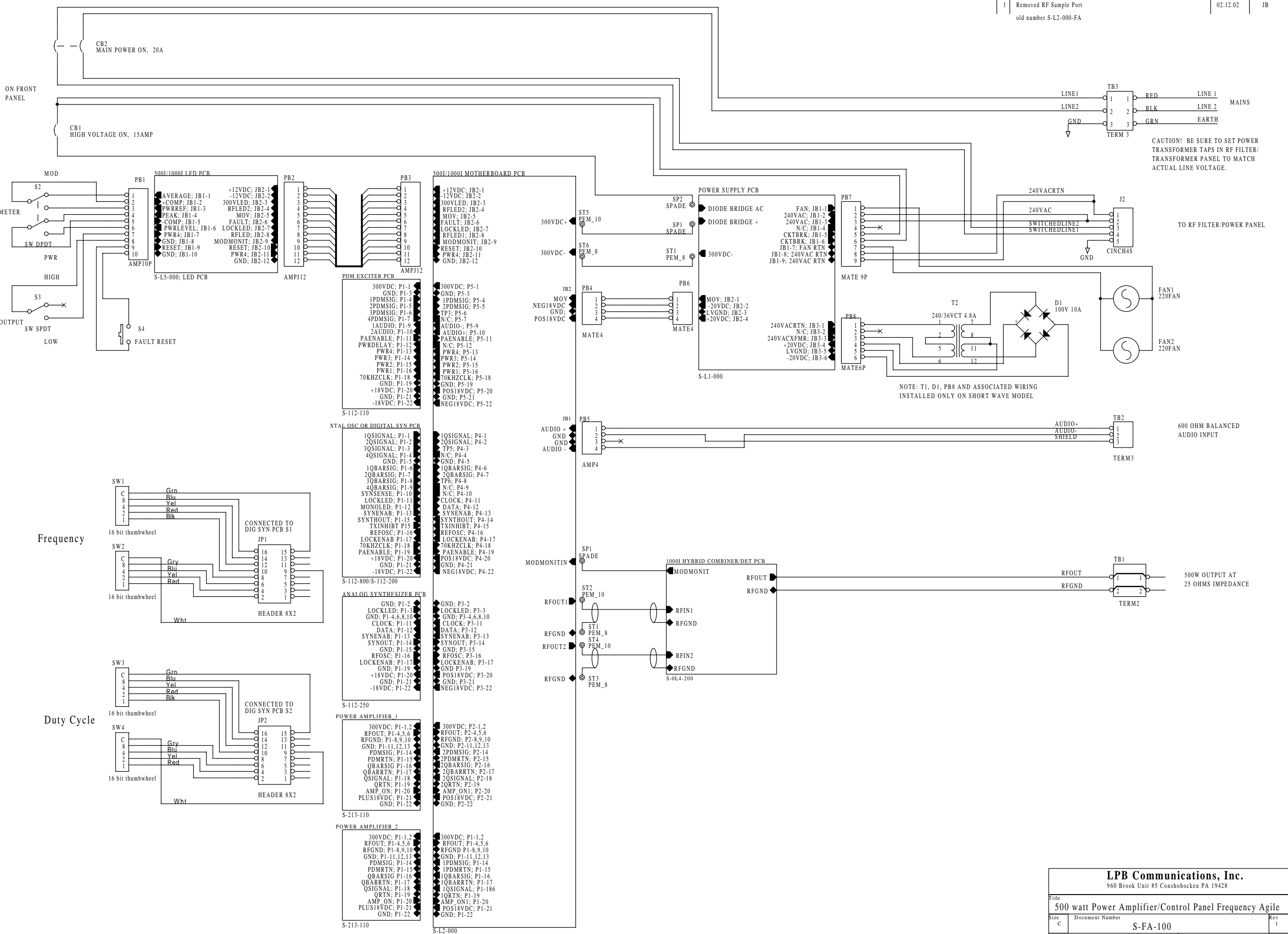


REV	DESCRIPTION	DATE	APPROVED
1	Removed RF Sample Port old number S-L2-000-FA	02.12.02	JB



CAUTION! BE SURE TO SET POWER TRANSFORMER TAPS IN RF FILTER/ TRANSFORMER PANEL TO MATCH ACTUAL LINE VOLTAGE.

NOTE: T1, D1, PB8 AND ASSOCIATED WIRING INSTALLED ONLY ON SHORT WAVE MODEL

LPB Communications, Inc.
960 Brook Unit #5 Conshohocken PA 19428

Title		500 watt Power Amplifier/Control Panel Frequency Agile	
Size	Document Number	S-FA-100	
C		Rev 1	
Date:	Sunday, December 29, 2002	Sheet	1 of 1