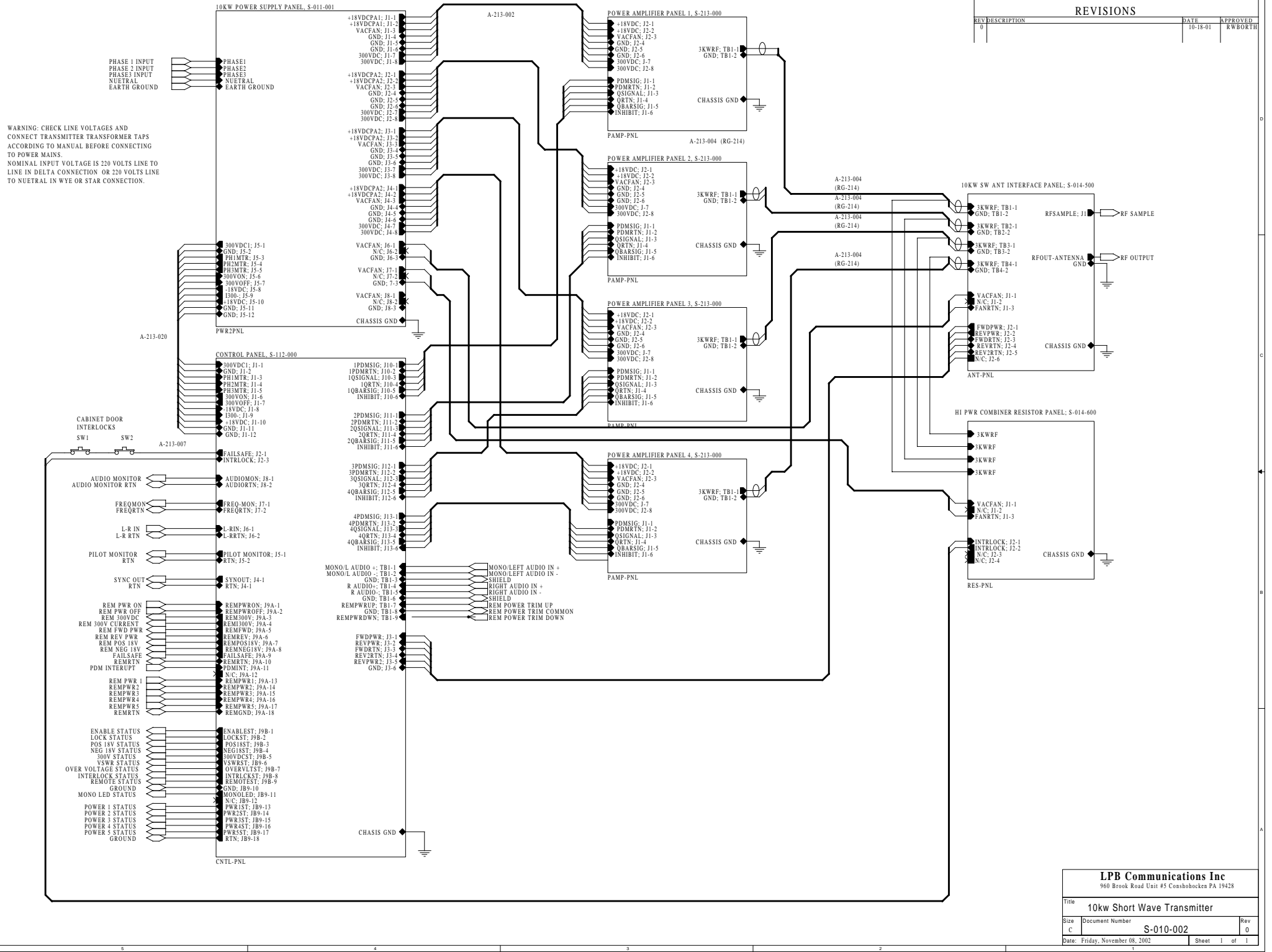


WARNING: CHECK LINE VOLTAGES AND CONNECT TRANSMITTER TRANSFORMER TAPS ACCORDING TO MANUAL BEFORE CONNECTING TO POWER MAINS.  
 NOMINAL INPUT VOLTAGE IS 220 VOLTS LINE TO LINE IN DELTA CONNECTION OR 220 VOLTS LINE TO NEUTRAL IN WYE OR STAR CONNECTION.

REVISIONS

REV	DESCRIPTION	DATE	APPROVED
1		10-18-01	KWBOR/TH



**LPB Communications Inc**  
 960 Brook Road Unit #5 Conshohocken PA 19428

Title 10kw Short Wave Transmitter		
Size C	Document Number S-010-002	Rev 0
Date: Friday, November 08, 2002		Sheet 1 of 1